

## PET MASTER OIL-FREE RECIPROCATING COMPRESSORS



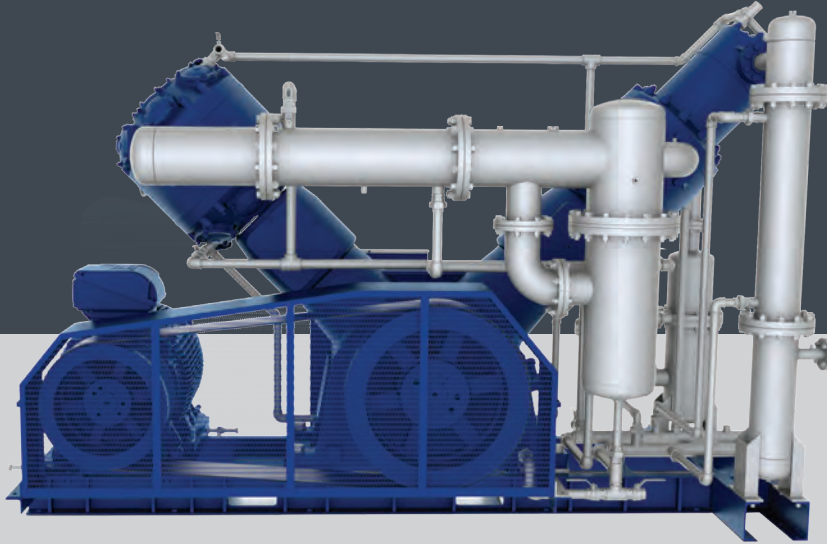
### STANDARD EQUIPMENT

High quality components such as IP55 electric motors with the IE3 efficiency class, star-delta motor starter system, electrical materials selected according to IEC, UL/cUL, CE standards as per the market requirements, durable compressor blocks are provided as standart in all our products.



### ADVANTAGES

HERTZ PET MASTER Series are reliable and high performance oil free reciprocating air compressors used in the pet bottling, food and health industries. Pet Master Compressors provide 100% oil-free pressurized air as no oil is used in the compression chamber. They operate between 0 and 40 Bar. As they have an integrated structure, they occupy less space and provide ease of installation.



## MAIN MOTOR AND DRIVE SYSTEM

- High efficiency 400V/3 phase/50Hz IE3 IP55 electric motor
- Special loadless start system and automatic discharge system for loadless start



## CONTROLLER\*

- Advanced, high-definition, userfriendly 7" color touchscreen
- High speed, industrial type PLC infrastructure with robust construction
- Encrypted Access Protection system with various levels of authorization.
- Display of relevant data on the screen clearly, trend graph recording and active monitoring
- Alarm History Record for the last 100 alarms
- Ethernet / ModBus communication functions as standard
- Remote monitoring and control feature /
- Compliance with GSM, internet and Industry 4.0
- Flexible programmable/expandable Input /Output structure



\*Only on Pet Plus and Wave reciprocating models with high pressure

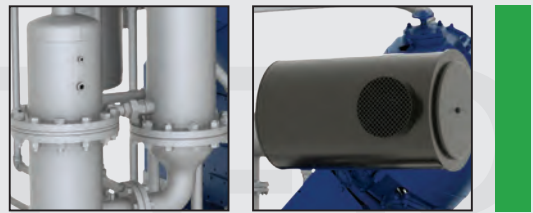


## PET MASTER Oil-Free Reciprocating Compressors

HERTZ PET MASTER Series are reliable and high performance oil free reciprocating air compressors used in the pet bottling, food and health industries.

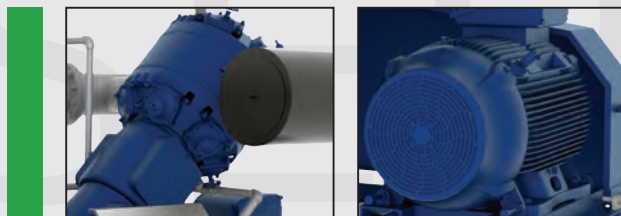
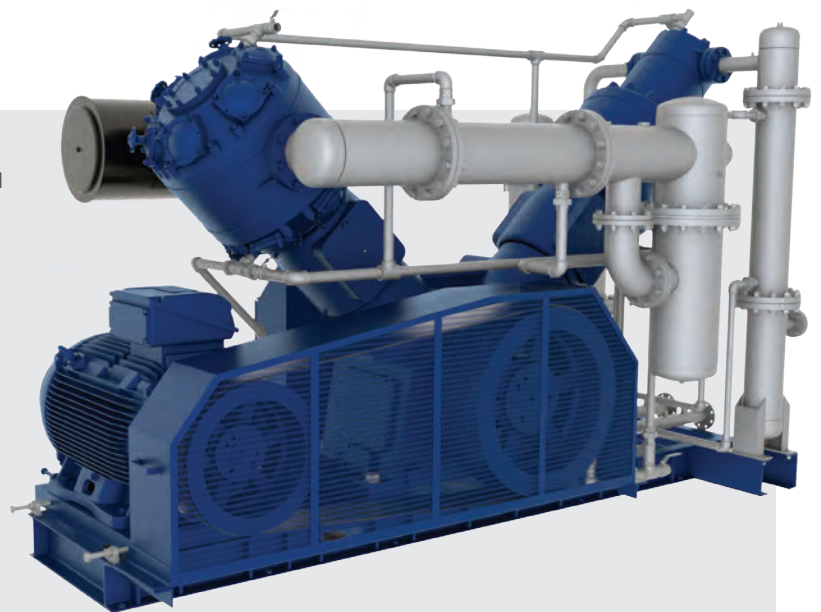
### ADVANTAGES

- Pet Master Compressors provide 100% oil-free pressurized air as no oil is used in the compression chamber.
- They operate between 0 and 40 Bar. As they have an integrated structure, they occupy less space and provide ease of installation and installation.



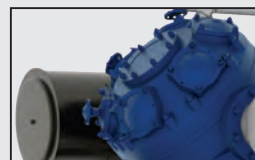
### GENERAL SPECIFICATION

- For intercoolers and aftercoolers, stainless steel pipe is used which is more efficient in terms of heat transfer and more resistant to corrosion.
- The structure of the coolers is designed to transfer air through the pipe and water through the body wall. Thanks to their compact design, pipe-type coolers are easy-to-maintain and their cooling efficiency is high.
- Compressor provides energy saving by operating with Load / Unload control system within maximum and minimum pressure set values determined according to system requirements.
- Its large body and low speed operation feature reduce the workload of the compressor.
- The integrated electrical system provides user-friendly operation.



## CONTROLLER

- Advanced, high-definition, user friendly 7" color touchscreen
- High speed, industrial type PLC infrastructure with robust construction
- Encrypted Access Protection system with various levels of authorization.
- Display of relevant data on the screen clearly, trend graph recording and active monitoring
- Alarm History Record for the last 100 alarms
- Ethernet / ModBus communication functions as standard
- Remote monitoring and control feature / Compliance with GSM, internet and Industry 4.0
- Flexible programmable/expandable Input /Output structure



## TECHNICAL DATA

MODEL	PRESSURE	R.P.M	CAPACITY	MOTOR POWER kW/HP	DIMENSIONS mm			WEIGHT kg
	Bar				m <sup>3</sup> /min	Width	Depth	
PET MASTER 50	40	300	3,6	37/50	1811	3533	2403	4800
PET MASTER 75	40	455	5,5	55/75	1811	3533	2403	4900
PET MASTER 100	40	385	7,4	75/100	1812	3550	2431	6300
PET MASTER 125	40	455	9,10	90/125	1812	3550	2431	6400
PET MASTER 150	40	380	11,6	110/150	1975	4168	2814	7350
PET MASTER 180	40	460	13,5	132/180	1975	4168	2814	7450
PET MASTER 220	40	460	16,4	160/220	1975	4168	2814	7850
PET MASTER 270	40	405	21,3	200/270	2212	4223	2840	9100
PET MASTER 300	40	450	23,0	220/300	2212	4223	2840	9200

**hertz**  
KOMPRESSOREN